

Engine oils that support business growth

For more than 90 years, Mobil Delvac™ has been a trusted lubrication collaborator for many of the world's most successful fleets, providing:



Dependability
that comes with extreme-temperature performance and outstanding engine protection



Efficiency and cost savings
from improved fuel economy potential* and extended oil drain interval capability†

Mobil Delvac™ engine oils	Enhanced engine protection	Emission system protection	Long oil drain interval capability†	Fuel economy potential*	Low-temperature performance
Mobil Delvac 1™ Advanced Fuel Economy 5W-30	★★★	★★★★	★★★★	★★★★	★★
Mobil Delvac 1™ ESP 0W-40	★★★	★★★★	★★★★	★	★★★★
Mobil Delvac 1™ ESP 5W-30	★★★	★★★★	★★★★	★★	★★
Mobil Delvac 1™ ESP 5W-40	★★★	★★★★	★★★★	★	★★
Mobil Delvac™ Extreme FE 10W-30	★★	★★	★★★★	★★	★★
Mobil Delvac™ Extreme 10W-30	★★	★★	★★★★	★	★★
Mobil Delvac™ Extreme 15W-40	★★	★★	★★★★		★
Mobil Delvac™ Super FE 10W-30	★★	★★	★★	★★	★★
Mobil Delvac™ 1300 Super 10W-30	★★	★★	★★	★	★★
Mobil Delvac™ 1300 Super 15W-40	★★	★★	★★		★

The number of stars indicates relative performance levels within the Mobil Delvac™ product range.

*Compared to an SAE 15W-40 engine oil. Actual savings are dependent on vehicle/engine type, outside temperature, driving conditions and your current engine oil viscosity.
†Results may vary based on vehicle/engine condition, driving and environmental conditions. Consult OEM or ExxonMobil before implementing extended ODIs.



Ask how we can drive efficiency at your job site

Mobil Serv™
Performance by ExxonMobil

Discover what Mobil™ lubricants can do for you. Contact your ExxonMobil distributor today or visit mobil.com/construction for more information.

ExxonMobil

© 2019 ExxonMobil. All trademarks used herein are trademarks or registered trademarks of ExxonMobil Corporation or one of its subsidiaries. Other trademarks shown are property of their respective owners.

XXXXXXXXXX

Chosen by many of the world's leading heavy-duty equipment manufacturers

Respected
name in heavy-duty lubricants

Trusted
by professionals worldwide

Proven
performance and protection



Boosting uptime



Mobil Delvac 1[®] ESP 0W-40, 5W-30, 5W-40 (CK-4) Mobil Delvac 1[®] Advanced Fuel Economy 5W-30 (FA-4)

Advanced full synthetic oils that demonstrate:

- Extended oil drain interval (ODI) potential up to 3X the average OEM ODI recommendation*
- Long engine life and reliable operation in a wide range of applications
- Emission system protection



Mobil Delvac[®] Extreme 10W-30, 15W-40 (CK-4) Mobil Delvac[®] Extreme FE 10W-30 (FA-4)

Synthetic oils that deliver:

- Extended ODI potential up to 2X the average OEM ODI recommendation*
- Up to 46% more antioxidant and 44% more anti-wear additive than Mobil Delvac[®] 1300 Super
- Exceptional oxidation stability†



Mobil Delvac[®] 1300 Super 10W-30, 15W-40 (CK-4) Mobil Delvac[®] Super FE 10W-30 (FA-4)

Synthetic blend oils that provide:

- Extended ODI potential up to 1.5X the average OEM ODI recommendation*
- Stay-in-grade shear stability and excellent low-temperature pumpability
- Excellent soot and viscosity control



Mobiltrans[™] AST Series

- All-season lubrication for all drivetrain components
- Helps deliver extended drain and service intervals
- Formulated for long clutch and wet brake life; meets Cat TO-4M specification

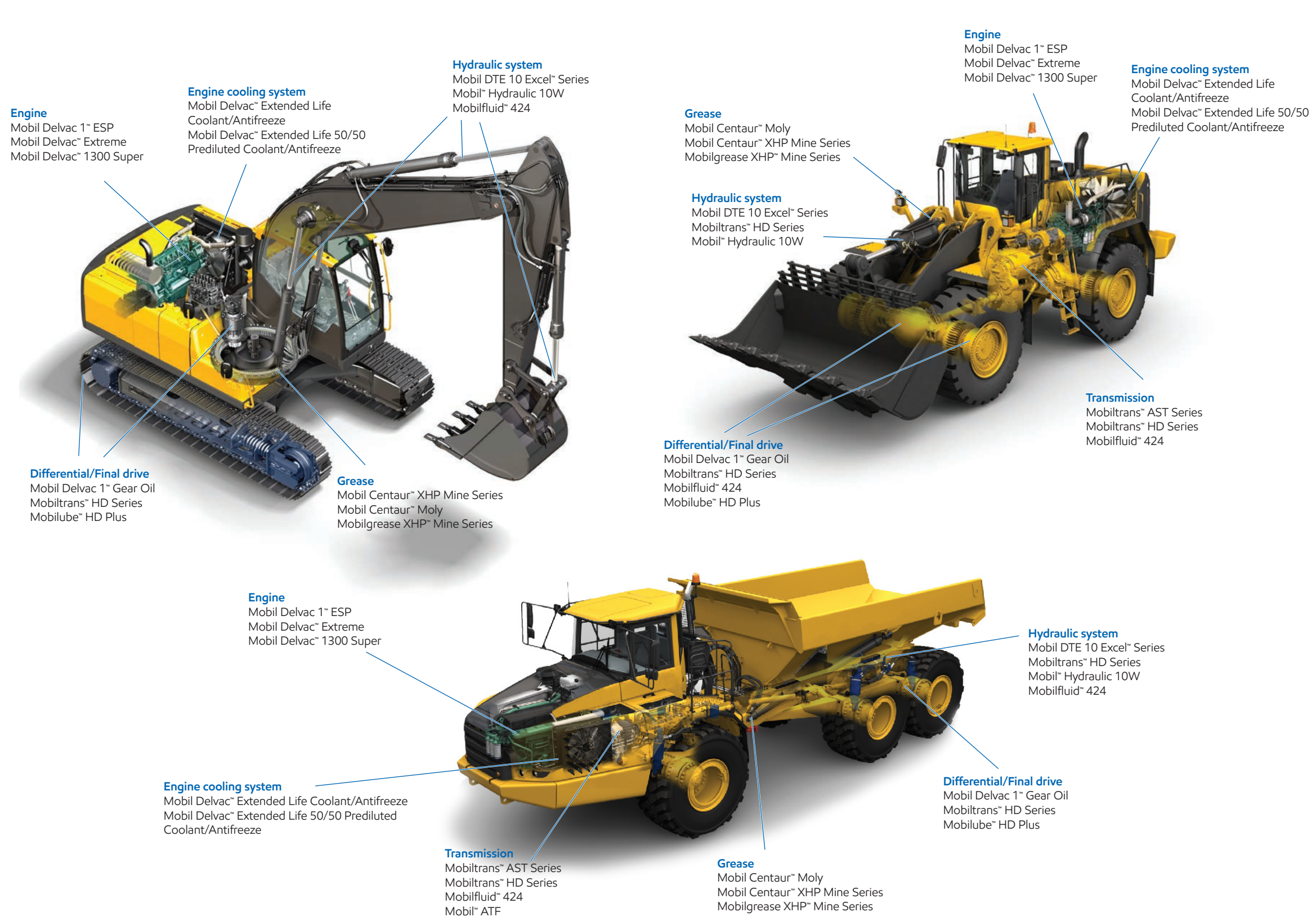


Mobil[™] DTE 10 Excel Series

- Outstanding wear protection and system cleanliness
- Excellent oxidation and thermal stability
- Energy efficiency potential to reduce fuel expenses

Heavy-duty technology for all of your heavy-duty equipment

Excavators? Loaders? Haul trucks? We've got you covered.



Reducing maintenance



Mobiltrans[™] HD Series

- Viscosity grades for hydraulic, transmission and drivetrain applications
- Formulated for long clutch and wet brake life; meets Cat TO-4 specification
- Excellent gear and bearing protection



Mobil[™] Hydraulic 10W

- Excellent performance in a wide range of hydraulic systems
- Protection against oil thickening, high-temperature deposits, varnish and oil degradation
- Good performance at higher temperatures and extended operating intervals



Mobil Centaur[™] XHP Mine Series

- Excellent extreme-pressure protection and load-carrying ability for equipment protection under heavy and shock loading
- Excellent high-temperature oil bleed control
- Advanced polymer additive package resists water washout



Mobil Centaur[™] Moly Grease

- Excellent extreme-pressure protection and load-carrying ability
- Enables extreme-pressure performance retention and protection in severe sliding situations
- Provides exceptional water resistance and corrosion protection



Mobilfluid[™] 424

- Exceptional performance in powertrain transmissions, drive axles, clutches, power take-offs (PTOs) and hydraulic systems
- Enhanced frictional properties help reduce chatter in wet brake and PTO service
- Multipurpose capability provides opportunity for lubricant consolidation

*Average OEM ODI recommendation based on recommended oil drain intervals from major U.S. engine manufacturers using API CJ-4 oils for a variety of service severity levels and engine models. Average OEM ODI API CJ-4 recommendation to substantiate multiplier claims is 31,750 miles. Results may vary based on vehicle/engine condition, driving and environmental conditions. Consult OEM or ExxonMobil before implementing extended ODIs, especially if the equipment/vehicle is under the OEM's warranty.
†Based on an analysis of Volvo T-13 engine test results.

This is a general illustration to identify some of the key components and applications, the list of products is not intended as a specific recommendation for any particular OEM model. Off-highway applications are different from model to model and OEM to OEM. For specific OEM model recommendations, please contact your ExxonMobil engineer.